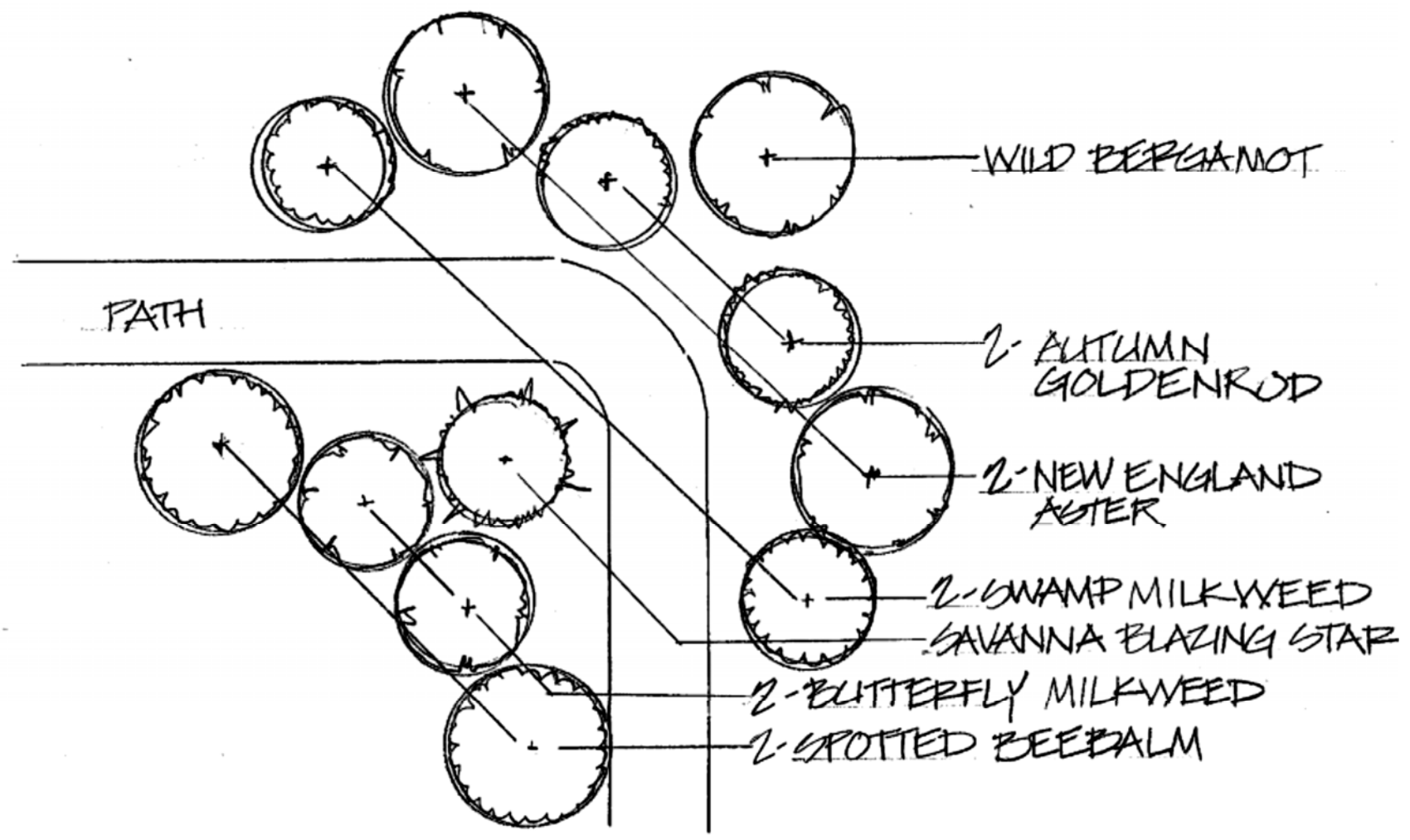




Illinois
Native
Plant
Society

MONARCH COLLECTION





MONARCH COLLECTION

1 - **Savanna blazing star**

(*Liatris scariosa* var. *nieuwlandii*)

full sun, tolerates some shade, 2-5' H, 12-18" W,

Bloom: July-Oct, Soil: medium dry, dry

2 - **New England aster**

(*Symphotrichum novae-angliae*)

full, partial sun, 5' H, 2-3' W, Bloom: Aug-Oct,

Soil: wet, medium-wet, medium, medium dry

1 - **Wild bergamot** (*Monarda fistulosa*)

full, partial sun, 4' H, 2-3' W,

Bloom: July-Sept, Soil: medium wet to dry

2 - **Spotted beebalm** (*Monarda punctata*)

full, partial sun, 2' H, 8-12" W,

Bloom: July-Sept, Soil: medium-dry, dry

2 - **Autumn goldenrod** (*Solidago sphacelata*)

sun to light shade, 4-5' H, 1-2' W,

Bloom: Aug-Oct, Soil: moist to dry

2 - **Swamp milkweed** (*Asclepias incarnata*)

full, partial sun, 4' H, 18-36" W,

Bloom: June-Aug, Soil: wet, medium-wet, medium

2 - **Butterfly milkweed** (*Asclepias tuberosa*)

full, partial sun, 2' H, 1-3' W,

Bloom: June-Aug, Soil: medium, medium-dry, dry

Add-on or swap :

Common milkweed (*Asclepias syriaca*)

full, partial sun, 2-6' H, 12-18" W,

Bloom: June-Aug, Soil: dry to medium