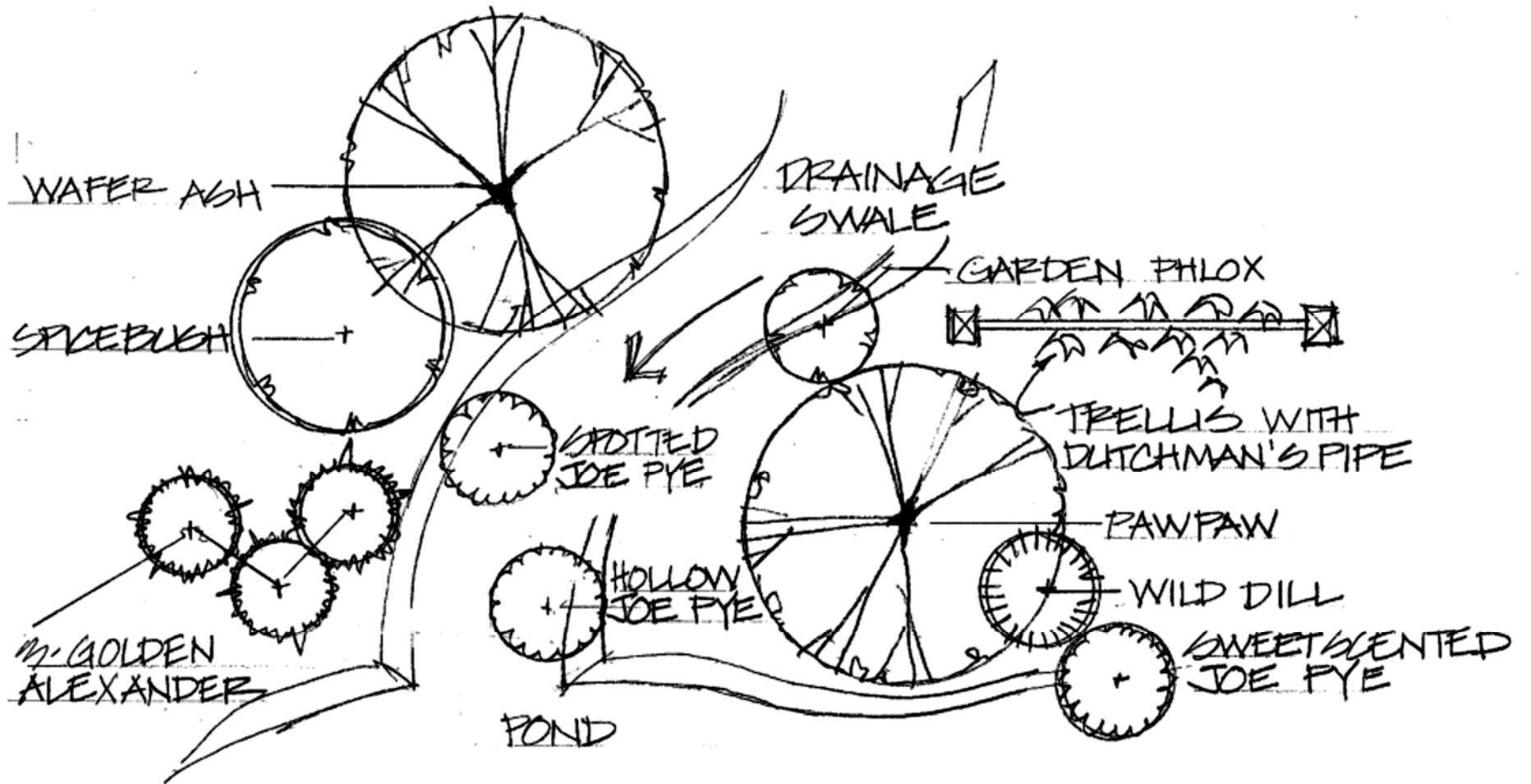




Illinois
Native
Plant
Society

SWALLOWTAIL COLLECTION





SWALLOWTAIL COLLECTION

3 - **Golden alexander** (*Zizia aurea*)

full, partial sun, 3' H, 1-2' W,

Bloom: Apr-June, Soil: medium-wet, medium, medium-dry

1 - **Hollow joe pye** (*Eutrochium fistulosum*)

sun, part shade, 4-7' H, 2-4' W,

Bloom: July-Sept, Soil: medium to wet

1 - **Sweetscented joe pye**, (*Eutrochium purpureum*)

sun, part shade, 5-7'H, 2-4' W,

Bloom: July-Sept, Soil: medium

1 - **Spotted joe pye** (*Eutrochium maculatum*)

full or partial sun, 3-5' H, 3-4' W,

Bloom: July-Sept, Soil: wet to moist

1 - **Woolly Dutchman's pipe AKA Pipevine**

(*Aristolochia tomentosa*)

partial shade, 20-30' long, 5-10' W,

Bloom: May-June, Soil: moist

1 - **Wild dill** (*Perideridia americana*)

light shade to full sun, 2-3.5' H, 18-24" W,

Bloom: Apr-July, Soil: moist to slightly dry

1 - **Spicebush** (*Lindera benzoin*)

full sun to part shade, 6-12' H, 6-12' W,

Bloom: March, Soil: medium water

1 - **Garden phlox AKA Fall Phlox** (*Phlox paniculata*)

full to partial sun, 4' H, 2-3' W,

Bloom: July-Sept, Soil: wet, medium-wet

1 - **Wafer ash** (*Ptelea trifoliata*)

part shade to full shade, 15-20' H, 15-20' W,

Bloom: June, Soil: dry to medium

1 - **Pawpaw** (*Asimina triloba*)

light shade to partial sun, 6-30' H, 6-30' W,

Bloom: Apr-May, Soil: moist to medium