



The Shooting Star

January 2019

Newsletter

“Dedicated to the study, appreciation, and conservation of the native flora and natural communities in Illinois.”

Inside this issue:

<i>President’s Message</i>	2
<i>Feature Plant of the Month</i>	2
<i>Events Calendar, TBA</i>	3
<i>Local Events & Announcements</i>	3-6
<i>Winter Twig Identification, Morton Arboretum</i>	7-8
<i>Hickory tree identification</i>	9
<i>Contact Us</i>	10

Winter Botany Walk and Potluck

Saturday, January 26th at 12:00 p.m.

INPS Members Only

Debbie Newman Residence, Ava, IL

Join us for this fun wintertime event at one of our member's house! Debbie Newman is a biologist with the Department of Natural Resources and has many acres of forested land near Ava. We will meet at noon, eat a warm hearty potluck lunch, and walk the property looking at plants. "Cadaver Botany" is a term that refers to looking at perennial plants in their dormant state. The dried up brown stems and seed heads often provide enough clues to make them identifiable and it is a fun exercise.

RSVP is required and the address of the event will only be provided to those who plan on attending. Contact Chris Benda at southernillinoisplants@gmail.com to sign up and receive directions.



Frost Flower



Green ash,
Fraxinus pennsylvanica

Photos courtesy, Chris Benda



If you are receiving a black and white newsletter by postal mail, please help lower our costs by signing up for an electronic copy in color. Send your email address to southernillinoisplants@gmail.com to be added to our email distribution list. Also please “like” our page on facebook at www.facebook.com/southernillinoisplants.



Message from the Southern Chapter President

I'm excited as I sit here in my cozy cottage in Makanda and think about the upcoming year. We will miss Sonja Lallemand stepping off the board, but welcome Nick Seaton. Nick is the River to River Cooperative Weed Management Area Coordinator. His predecessors include Chris Evans, Karla Gage, and Kevin Rohling, all INPS members as well some serving as previous board members. The board and I are grateful for the contributions made by all to keep the chapter engaged and relevant in the local conservation community.

For January, we will continue a yearly tradition by having a "cadaver" botany hike and potluck on January 26th at Debbie Newman's house near Ava. Cadaver in this sense refers to identifying plants by the brown dried up remains of the dormant perennials.

Please bring a dish to share and RVSP to southernillinoisplants@gmail.com. The address of the event will only be shared with those who RSVP. The weather always seem to be temperamental this time of year so hopefully it will be a pleasant day for the outing!

Otherwise the board will meet later this month to discuss programming for 2019. Save the date, for April 5-7, for our annual Indigenous Plants Symposium and native plant sale. The annual gathering is still being discussed and will likely be in the northern part of the state.

Your continued support is greatly appreciated and so I ask that you please renew your memberships for 2019 on our website (www.ill-inps.org) or by mailing in the form on the last page of this newsletter.

Thank you for making the society what it is! ~Christopher David Benda

Photo courtesy, Chris Benda



Inspiration Point, LaRue Pine Hills Research Natural Area

**"Save the date,
April 5-7, for our
annual Indigenous
Plants Symposium
and Native Plant
Sale."**

Feature Plant of the Month

**American Holly,
*Ilex opaca***

Keep the joy in the air with a unique woody evergreen that's not a pine tree. American holly is a species most noted in the Appalachian mountain range and the eastern United States. It is the only holly native to the U. S. with spiny green leaves and bright red berries combined (unlike the native deciduous holly, *Ilex decidua*), also the most cold hardy. The other similar species, English Holly, *Ilex aquifolium*, is native to Europe, western Asia, and north Africa, and exhibits less winter hardiness. The flowers are greenish-white, blooming May through June, which eventually transform into bright red berries (female flowering trees). The berries a good food source for birds and small mammals, persisting through the winter while the flowers attract various insects.



Photo courtesy,
Jennifer Behnken, Illinois Wildflowers

2019



Southern Chapter

P.O. Box 271, Carbondale IL 62901

southernillinoisplants@gmail.com

www.facebook.com/southernillinoisplants

Stay tuned for exciting programs in the 2019 Calendar of Events!

Local Events & Announcements

LeafByte, Measuring Herbivory

LeafByte is now available for **free** in the App Store. Snap a picture of a leaf and printed scale, and LeafByte will measure the total leaf area, leaf area consumed, and percent leaf area consumed in any units.

LeafByte has a lot of useful features, such as **saving all your data automatically** to Google Sheets or as a csv file on your phone. LeafByte works non-destructively, and it can read and record barcodes and record your location. LeafByte measures most leaf shapes and sizes (needles and very lacy leaves are a challenge), and can measure dark leaves or flower petals on a white background, or light leaves or flower petals on a dark background.

For more information, visit <https://zoegp.science/leafbyte>.



Job Announcements

The Missouri Department of Conservation is advertising for a Grassland Botanist position to be stationed out of its Clinton, MO office. The job closes February 1. The link to the job description is at: <https://jobs.mdc.mo.gov/job/Clinton-Plant-Resource-Scientist-MO-64735/526872300/>.

Illinois Environmental Council Communications; the IEC/IECEF is seeking a Communications Director to manage the organization's traditional and digital communications, including getting our message into the news by pitching reporters, conducting and planning interviews, drafting written communications, and managing social media accounts in order to strengthen IEC/IECEF's public brand. The communications director can be located in Chicago, IL at our downtown office or in Springfield, IL at our main headquarters. To Apply and for more information, e-mail jwalling@ilenviro.org with a cover letter, resume, and salary requirements.

Local Events & Announcements

Giant City State Park

Hike the River to River Trail across Southern Illinois

Sunday, January 13th, 2 – 3 pm

In December 2018, Chris Benda hiked the River to River Trail from Elizabethtown on the Ohio River to Grand Tower on the Mississippi River and blogged about it as he hiked. Join him as he explains the challenges of this thru-hike, as well as the ecology of the land and plants observed along the trail. No registration required.

Winter Walk in the Woods

Saturday, January 19th, 10 – 11:30 am

It may be cold outside, but winter is a great time to get some exercise and fresh air as we take in the natural beauty of Giant City State Park. Join the Natural Resources Coordinator as we take a leisurely stroll through the winter woods on the moderately difficult 1-mile Giant City Nature Trail. For more information or to register, please contact the Giant City Visitors Center at 618-457-4836.

Maple Syrup Program

Wednesday, February 6th, 6 – 7 pm

Curious about maple syrup production? Join Chris Evans, University of Illinois Extension Forester, as he covers the basics of tree identification, equipment needs, tree tapping, sap collection, boiling, and finishing maple syrup.



Save Plants, Save the Planet, Save Ourselves Donate to the Native Plant Conservation Campaign Today

Native
Plant
Conservation
Campaign

Dear NPCC Supporter:

<https://plantsocieties.cnps.org/>

Please [donate](#) to help the Native Plant Conservation Campaign continue to build a strong national voice for native plant conservation in the United States.

2018 was a frightening year for supporters of science and the environment. **But despite everything, we were able to make significant progress in native plant conservation.**

Did YOU know?

- The Native Plant Conservation Campaign now has [52 Affiliate groups](#), representing more than 250,000 native plant conservation advocates!
- The NPCC and partners organized the first ever [Get Out The Vote for Plants and Wildlife](#) initiative in 2018. We registered voters and helped get them to the polls all over the U.S.!
- [Legislation to promote native plant conservation](#) has been introduced in both the House and the Senate!
- At least [one state \(New Jersey\) and several local communities](#) require locally adapted native plants to be used for all roadside revegetation projects!
- Under the historic [National Seed Strategy](#), more than 150 projects have been implemented to develop reliable sources of locally adapted native plant materials for restoration and revegetation!
- The NPCC and partners are working to defend the federal Endangered Species Act and other laws protecting native plants and wildlife [from unprecedented attacks from the Trump administration and Congress!](#)



Backyard Maple Syrup Production Workshop February 2nd, 2019 10:00am

The fourth annual backyard maple syrup production workshop will be held on Saturday, February 2, 2019 from 10am-3pm at the Dixon Springs Agricultural Center, located at 354 State Highway 145 N, Simpson, IL 62985. This program is free and open to the public.

We are offering an expanded program this year! From 10-noon come learn the basics and see firsthand the entire process of backyard maple syrup production. Following a free lunch at noon, we will have maple syrup experts from Michigan State University on hand to discuss scaling up production and advanced techniques and demonstrating equipment.

During the morning session, the University of Illinois Extension will provide some activities for kids, including taste testing of real maple syrup!

You can choose to come to the morning session, the afternoon session or both!

Register by January 30th at https://web.extension.illinois.edu/state/calendar_event.cfm?ID=80344

For more information:

Chris Evans—
cwevans@illinois.edu,
618-695-3383



Funding for this event provided, in part,
by the USDA-ACER program

University of Illinois College of Agricultural, Consumer and Environmental Sciences— United States Department of Agriculture.—Local Extension Councils Cooperating provides equal opportunities in programming and employment.

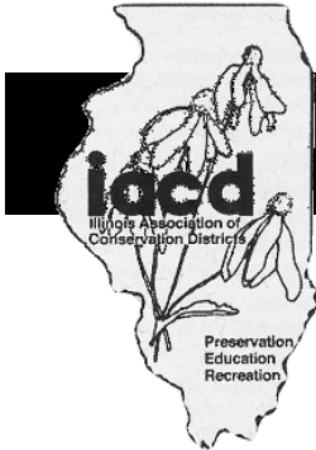
If you need a reasonable accommodation to participate in this program, contact Dixon Springs Ag Center at 618-695-2441.



**February 2, 2019
10am-3pm**

Program Schedule

- **10:00am to Noon** - Maple syrup basics, kids activities, field tour
- **Noon** - Lunch (provided)
- **1:00pm to 3:00 pm** - Advanced



Register Online for the

Illinois Association of Conservation Districts Conference

What: “Strengthening Conservation through Partnerships” Conference

Where: Starved Rock State Park in Utica, IL

When: February 21 & 22, 2019
Thursday, 1pm until Noon on Friday
(with optional pre-conference workshop or tour)

Who: All conservation agency, forest preserve, or IDNR staff, from entry level positions to administrators

Why:

- Network among professionals in your field with the same job responsibilities as you
- Collaborate with other agencies on joint projects
- Share creative natural area restoration and educational program ideas

How Much: IACD Members \$75 by January 5 (\$85 after)
Non-member \$90 by January 5 (\$100 after)



See topics, speakers, and register online at www.iacd.online

For questions, contact: Tina Dawson Scott of Boone County Conservation District at 815-547-7935 or tdawson@bccdil.org

VOL 18 No. 11

NOVEMBER, 1943



MORTON ARBORETUM

JOY MORTON FOUNDER

BULLETIN OF POPULAR INFORMATION

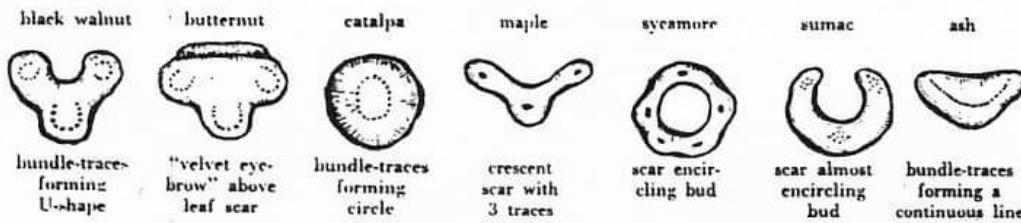
LISLE, ILLINOIS

WINTER TWIGS

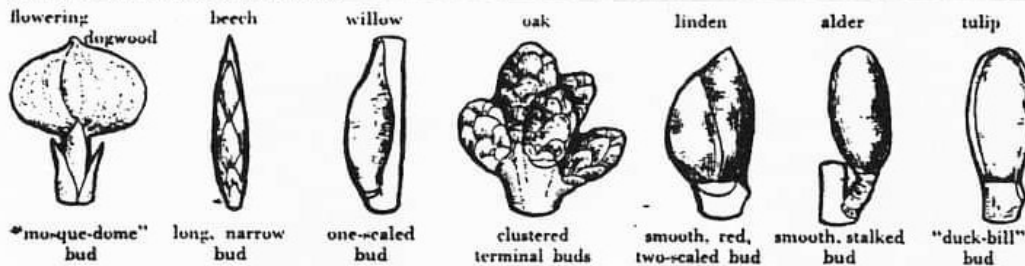
Some trees have winter twigs so distinctive that one may easily identify the tree by the twig alone. This means of identification offers precision not present in such features as leaves, bark, tree-form. Vascular bundles, lenticels, leaf-scars, bud-scales are comparable to fingerprints in providing accuracy in a small compass. These twig characteristics are especially valuable because they are present on the tree at all seasons. Even the winter-buds are present for all but a very short period each year.

In this bulletin are presented only those trees with twig characteristics so distinctive that identification may be based on those alone.

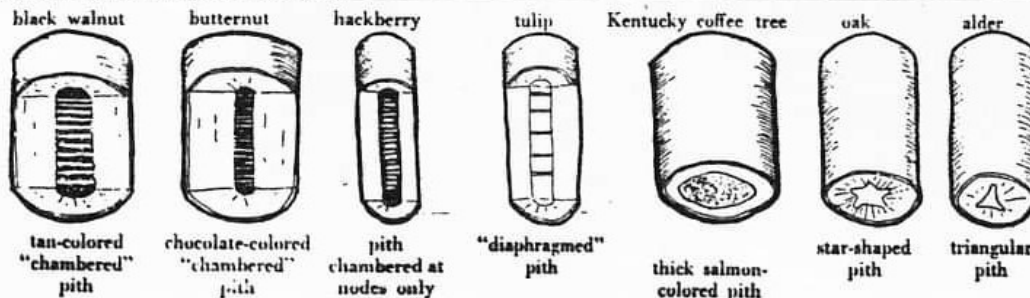
SOME HAVE DISTINCTIVE LEAF SCARS:



SOME HAVE DISTINCTIVE BUDS:



SOME HAVE DISTINCTIVE PITH:



TREES WITH OPPOSITE BRANCHING

ASHES: rough, dry buds; bundle scars forming a curved, continuous line

WHITE ASH
Fraxinus americana



first lateral buds
beside terminal bud

BLACK ASH
Fraxinus nigra



first lateral buds
below terminal bud

BLUE ASH
Fraxinus quadrangulata



4-sided twigs

RED ASH
Fraxinus pennsylvanica



twig and bud pubescent

MAPLES: smooth buds; crescent-shaped leaf scars with 3 bundle scars

SUGAR MAPLE
Acer saccharum



brown buds on brown
twigs

NORWAY MAPLE
Acer platanoides



keeled bud scales,
green and red buds

RED MAPLE
Acer rubrum



red buds,
no fetid odor

SILVER MAPLE
Acer saccharinum



red buds,
fetid odor
when crushed

BOX-ELDER
Acer negundo



purple twigs with bloom
that rubs off,
buds whitish, pubescent

AESCULUS: large terminal bud

HORSE-CHESTNUT
Aesculus hippocastanum



buds sticky

OHIO BUCKEYE
Aesculus glabra



buds dry

FLOWERING
DOGWOOD
Cornus florida



onion-shaped flower buds

CATALPA
Catalpa speciosa
Catalpa bignonioides



buds often 3 at a node

TREES WITH CATKINS PRESENT IN THE WINTER

IRONWOOD
Ostrya virginiana



usually 3 stiff small
catkins at end of twig

GRAY BIRCH
Betula populifolia



single catkin
at end of twig

YELLOW BIRCH
Betula lutea



trees with
dark peel-
ing bark

PAPER BIRCH
Betula papyrifera



trees with
white peel-
ing bark

RIVER
BIRCH
Betula

nigra

CHERRY
BIRCH
Betula

lenta

EUROPEAN WHITE
BIRCH, *Betula*

pendula

catkins in 2's or 3's

EUROPEAN ALDER
Alnus glutinosa



mahogany-colored catkins
stalked buds

Identification Characteristics of Hickory Species Native to Illinois Quick Reference Chart

Christopher W. Evans, Extension Forestry and Research Specialist
University of Illinois, Department of Natural Resources and Environmental Sciences

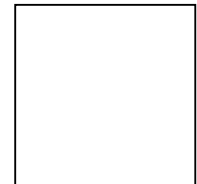


Common Name	Leaflet Number*	Rachis	Twig	Bud	Fruit size	Fruit husk	Bark
Water hickory <i>Carya aquatica</i>	7-17	Hairy	Thin, hairy	Elongate, hairy and brown	Medium, pear-shaped	Thin, winged	Variable, often very platy
Bitternut hickory <i>Carya cordiformis</i>	7-11	Smooth	Thin, smooth	Elongate, sulfur yellow	Small, rounded	Thin, winged about half-way	Tight, not scaly
Pignut hickory <i>Carya glabra</i>	5-7 (5)	Smooth	Thin, smooth	Small	Small, rounded or pear-shaped	Thin, does not split to base	Tight, not scaly
Pecan hickory <i>Carya illinoensis</i>	9-17	Hairy	Medium, hairy	Elongate, hairy and brown	Small, elongate	Thin, winged	Platy
Shellbark hickory <i>Carya laciniosa</i>	5-9 (7)	Sparse hairs	Stout, smooth	Large, hairy	Very large, rounded	Very thick, splits easily	Loose, scaly
Red hickory <i>Carya ovalis</i>	5-9 (7)	Smooth	Thin, smooth	Small, rounded	Small, rounded	Thin, splits to the base, may be slightly winged	Tight or slightly scaly, deeply furrowed on larger individuals
Shagbark hickory <i>Carya ovata</i>	5-7 (5)	Fuzzy	Stout, fuzzy	Large	Large, rounded	Thick, splits easily	Loose, scaly
Pale hickory <i>Carya pallida</i>	7-9 (7)	Hairy and scaly	Thin, smooth or slightly hairy	Small, yellow scales	Variable, rounded or pear-shaped	Medium, covered in yellow scales	Tight, not scaly
Black hickory <i>Carya texana</i>	5-9 (7)	Hairy	Thin, hairy	Small, yellow scales and reddish hairs	Variable, rounded	Thin, covered in yellow scales	Very dark, deeply furrowed
Mockernut hickory <i>Carya tomentosa</i>	7-9	Hairy	Stout, hairy	Large	Large, rounded	Very thick, splits easily	Tight, dark and deeply furrowed at maturity

*Leaflet number given in the range, followed by, if applicable, the number typically observed

© 2018 University of Illinois at Urbana-Champaign. All Rights Reserved.
The Dept. of Natural Resources and Environmental Sciences and Extension Forestry at the University of Illinois would like to thank and acknowledge the Renewable Resources Extension Act (RREA) and the USDA National Institute of Food and Agriculture for Extension Forestry program funding.
University of Illinois • U.S. Department of Agriculture • Local Extension Councils Cooperating
University of Illinois Extension provides equal opportunities in programs and employment

INPS SOUTHERN CHAPTER
P.O. Box 271
Carbondale, IL 62903-0271



southernillinoisplants@gmail.com
www.ill-inps.org



Dodecatheon frenchii –
French's Shooting Star

Board Members

President: Chris Benda
VP: Jean Sellar
Secretary: Erin Medvecz
Treasurer: Nancy Garwood
At-large: Jody Shimp
At-large: Marisa Szubryt
At-large: Nick Seaton
Newsletter: Jennifer Behnken

Know someone who would like to receive our newsletter? Please have them send their email address to southernillinoisplants@gmail.com to be added to our distribution list!



Join us!

- New Member Address Change only
 Renewal Additional Donation

Name _____
Street _____
City _____ State _____ Zip _____
Phone Number _____ Membership Year _____
Email _____

Membership Categories

- Student.....\$15.00
 Individual.....\$25.00
 Family.....\$35.00
 Institutional (nonvoting)..\$20.00
 Supporting.....\$50.00
 Patron.....\$100.00
 Business.....\$125.00
 Life.....\$500.00
 Iliamna (life).....\$1,000.00
 Dodecatheon (life).....\$2,000.00
 Erigenia (life).....\$3,000.00

PLEASE MAKE CHECKS PAYABLE TO:

Illinois Native Plant Society, P.O. Box 271, Carbondale, IL 62903

The Harbinger Newsletter is sent electronically by email.

Check here to receive the newsletter BY MAIL

Erigenia, our scientific journal, is now available digitally as well as in print.
Please indicate your preference for receiving the journal.
 Email only Postal Mail only Both

Chapter Affiliation

- Central (Springfield) Northeast (Chicago)
 Forest Glen (Westville) Quad Cities (Rock Island)
 Grand Prairie (Bloomington) Southern (Carbondale)
 Irene Cull (Peoria) Other/Uncertain _____
 Kankakee Torrent

I would like to help with:

- Leadership & Organization (serving on board at State or Chapter level) Giving Workshops &/or Seminars Public Media/Communications
 Leading Field Trips & Tours Public Speaking Writing/Submitting articles
 Organizing Workshops &/or Seminars Fund Raising Photography
 Website Assistance/Managment Other: _____