



The Shooting Star

NEWSLETTER

of the

Illinois Native Plant Society – Southern Chapter

DECEMBER 2010



You are cordially invited to Ron and Clara Kiser's for a holiday dinner and hike!



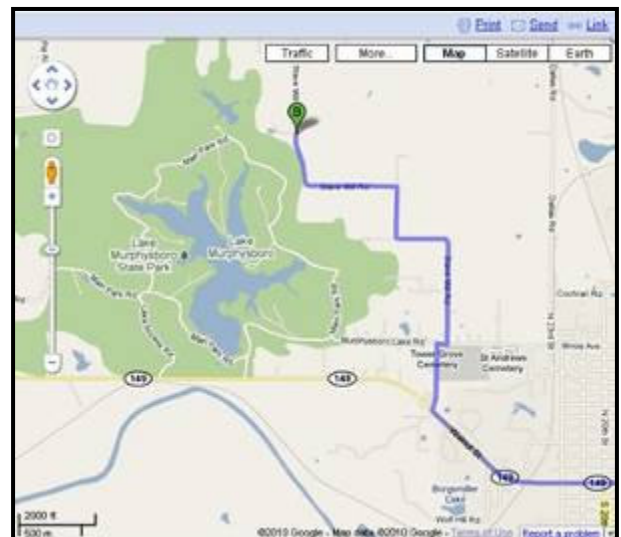
WHEN: Sunday, December 12th 2010 at 1pm

Please bring an item to share such as finger sandwiches, salad, dessert, bread, muffins, and/or a bottle of wine.

The Kisers will provide a variety of homemade soups.

After lunch, we will walk to the Glacial Drift Hill Prairies at Lake Murphysboro State Park and return for leftovers and beverages. Please RSVP the Kisers at (618)687- 2235 or Pontiac@egyptianpontiac.com.

Directions: From Murphysboro, follow Hwy 149 west and turn right at Murphysboro Lake Road. At the T intersection, take a right on Illinois Ave, then take a quick left on Stave Mill Road. Follow several turns in the road to Ron & Clara Kiser's at 1723 Stave Mill Road.





Two new manuals in the Bur Oak Guides series - "The Tallgrass Prairie Center Guide to Seed and Seedling Identification in the Upper Midwest," by Dave Williams, illustrated by Brent Butler, and "The Tallgrass Prairie Center Guide to Prairie Restoration in the Upper Midwest," by Daryl Smith, Dave Williams, Greg Houseal and Kirk Henderson - are now available from the University of Iowa Press.



*** Past Event: Todd Fink Natural Area***

November 13th, 2010 – High Quality Sandstone Glade, Ozark, IL

By Chris Benda: Only a few hearty folks turned out for November's outing to the high quality Sandstone Glade at Todd Fink Natural Area, a site recognized by the Illinois Natural Areas Inventory. The rain was steady, but the glades are extensive and the expansive bedrock pavement made for very pleasant hiking. Dustin and I tested our plant knowledge, while others simply enjoyed the beauty. The colors were



brilliant against the contrast



Aerial Photo of Todd Fink Natural Area

of the dull, gray sky. The brown grasses, green mosses, purple Farkleberry leaves, red oak leaves, and gray lichens made me appreciate the site more than any other time I've visited. For a biography about the late Heritage Biologist, Todd Fink, see <http://twister.lib.siu.edu/calendar/bio.html>.

Related December Events

- December 3rd, 6pm – 9pm: Southern Illinois Farmer Network Launch, at the Field of Dreams Banquet Facility on 145 Lexi Drive, just off of Reed Station Road in Carbondale. For questions or more information about this network, please visit <http://eatsouthernillinois.org>. You may also email Jerry Bradley at jerry@eatsouthernillinois.org or call 618.319.2715.
- December 9th, 11am – 3pm: Cache River Holiday Open House, Cypress Creek Wildlife Refuge. Shawnee Community College, 0137 Rustic Campus Drive, Ullin, IL.

The University of Wisconsin Press recently announced the addition of [Native Plants Journal](#) to its publishing program. The Press will begin publishing the journal in 2011 with volume 12.

Native Plants Journal is a forum for dispersing practical information about planting and growing North American native plants for conservation, restoration, reforestation, landscaping, highway corridors, and related uses. It is edited by R. Kasten Dumroese of the USDA Forest Service at the Rocky Mountain Research Station. Please visit <http://npj.uwpress.org> to browse and search content, sign up for alerts, or subscribe.

2011 Officer Elections - Please vote!

Attached to the newsletter is a ballot for the southern chapter of the Illinois Native Plant Society for the next calendar year, 2011. There are new candidates for the positions of Vice-president and Secretary, as well as two At-large board members. Although there is only one candidate running for each position, please help us make it official by voting for each position. Please send your votes to the board at PO Box 271, Carbondale, IL 62901 or southernillinoisplants@gmail.com.

2011 Plant Biology Student Calendar Sale

Makes a unique, locally produced holiday gift!



All pictures were taken and calendars produced by Plant Biology students

Calendars are 8 x 11, high quality color printing, spiral bound with plastic cover, and include US holidays

Please fill in your name, email and the number of calendars you want to order, then return to the campus address OR email address listed at the bottom

Name: _____ **Email address:** _____

Office location (for delivery): _____

Number of 8 X 11 calendars (\$11 each): _____

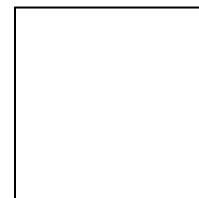
All pictures posted in the PLB office (420 LSII) if you wish to see them before ordering

Mailing:

Plant Biology Department, c/o Sara Koropchak
1125 Lincoln Dr.
Southern Illinois University Carbondale
Carbondale, IL 62901

Email: koropchk@siu.edu

INPS SOUTHERN CHAPTER
P.O. Box 271
Carbondale, IL 62903-0271
www.ill-inps.org



A big **THANK YOU** to **Chris Benda** for his presentation and field outing about **Sandstone Glades of the Shawnee Hills** last month.

INPS 2010/2011 CALENDAR

Upcoming Events:

December 12 th	Ron & Clara Kiser	Holiday Dinner	Murphysboro, IL
January 18 th	TBA		
February 18 th	Doug Tallamy	Bringing Nature Home	SIUC campus

Past Events:

November 16 th	Chris Benda	Sandstone Glades	SIUC campus
November 13 th	Chris Benda	Todd Fink NA	Ozark, IL
October 19 th	Scott Schuette	IL Bryophytes	SIUC campus
September 21 st	Ryan Klopff	Illinois Prairies	SIUC campus

**ILLINOIS NATIVE PLANT SOCIETY – SOUTHERN CHAPTER
2011 OFFICER ELECTIONS (Term length = 1 year Jan – Dec)**



PRESIDENT – Chris Benda (incumbent) or _____ (write in vote)



TREASURER – Rhonda Rothrock (incumbent) or _____ (write in vote)



VICE-PRESIDENT – Chris Evans or _____ (write in vote)



Chris Evans is a native Kentuckian who moved to southern Illinois in 2007 to become the coordinator of the River to River Cooperative Weed Management Area. His appreciation for native plants and natural communities lead him to be deeply concerned about the impacts of invasive plant species and to pursue a career working on invasive species management and natural area restoration. He has a B.S. in Wildlife Biology from Murray State University and a M.S. in Forest Ecology from Iowa State. His current job duties include working with agencies and private landowners to manage invasive plants and educating the public.



SECRETARY – Sara Koropchak or _____ (write in vote)



Sara Koropchak is a Carbondale, IL native that has been Illinois-based her whole life. She graduated from the University of Illinois Urbana-Champaign with a B.S. in Integrative Biology and from Southern Illinois University Carbondale with an M.S. in Plant Biology. Currently she is managing a bryology/peatland ecology research lab in the Department of Plant Biology at SIUC in is active in the SIUC Restoration Club. From her research experiences in the Plant Biology Department, particularly related to reclamation, Sara acquired a keen interest in the use of native plants to improve local biodiversity, prompting her to join the INPS. Sara is also currently training for a marathon.



AT-LARGE BOARD MEMBER – Nancy Garwood or _____ (write in vote)



Nancy Garwood is a native of southern New Jersey and moved to Chicago for her B.A. (1973) and Ph.D. (1979) in Biology from the University of Chicago. After teaching at a university in Chicago, she carried out research relating to tropical botany outside of the USA for the next 20 years, and arrived in the area about 6 years ago as an adjunct professor at Southern Illinois University. She currently is Curator of the SIU Herbarium and her early interests in the flora in the varied reserves of northern Illinois have transferred here, where she is now delighted to have the opportunity to learn the much more diverse flora of Southern Illinois. Nancy hopes that her varied professional experience in botany, and keen interest in the local flora, can help the Southern Chapter of INPS flourish.

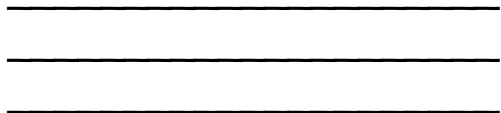


AT-LARGE BOARD MEMBER – Jody Shimp or _____ (write in vote)



Jody Shimp has been working in Illinois natural areas for the past twenty four years as a volunteer, researcher, ecologist, and currently as an administrator for the Division of Natural Heritage at the Illinois Department of Natural Resources where he administers, manages, and implements the natural heritage program for a 28 county region in southern Illinois. He completed a M.S. in Plant Biology from Southern Illinois University-Carbondale in 1996. Shimp is a life member of the Illinois Native Plant Society and has served as an officer in the past for the Southern Chapter. Shimp has also served on the Board of Directors for the Natural Areas Association and the Midwest Invasive Plant Network.

This ballot is intended to be folded in thirds, taped, and sent to the address as labeled or email votes to southernillinoisplants@gmail.com.



INPS SOUTHERN CHAPTER
P.O. Box 271
Carbondale, IL 62903-0271